



Sensor H01

Short characteristics of Sensor

Rotating sensor H01 is designed for automotive shaft position monitoring. For working with two inductors enable separation sparks at base state signal of sensor (Fall/Rise edge).

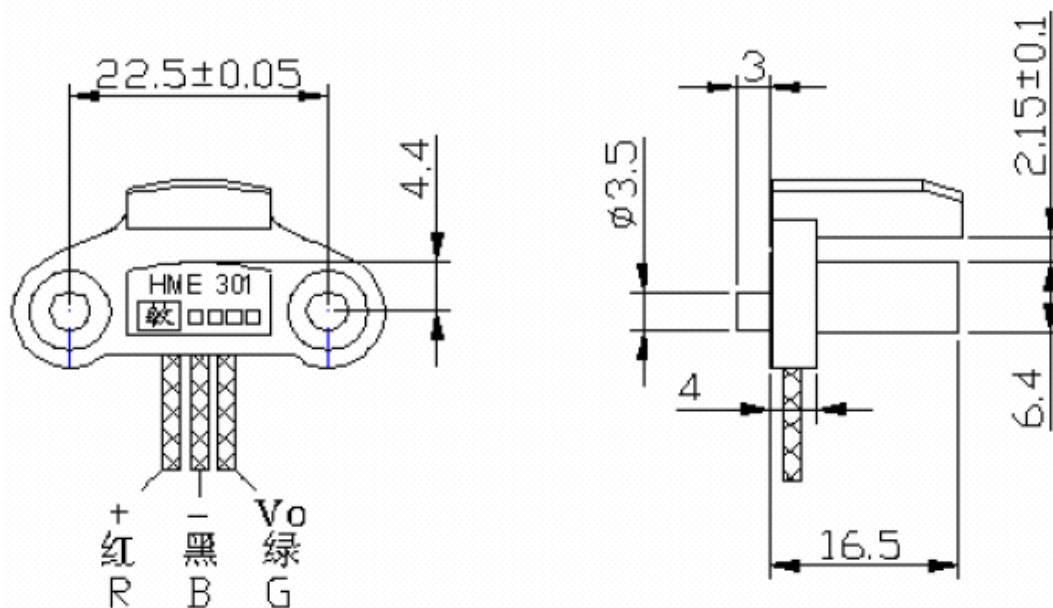
Physical principle is gate set up by intelligent Hall sensor and Magnet. Magnetic field is breaking by ferro-magnetic (iron) rotating disc.

Sensor is determinate for ignition of type *Universal Ignition* and *Direct Ignition*.

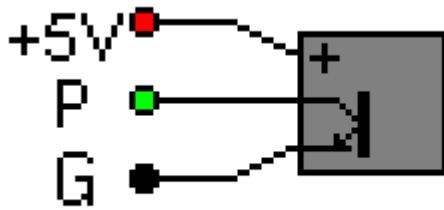
Main Features

Parametes	Range
Supply voltage	4,5 – 30V
Current consumption	9mA
Engine working speed	0 to 25.000 rpm
Operating Temperature Range	-40 to 150°C
Output type	Open colector (NPN)
Output current	40mA
Output voltage	40V
Output Saturation Voltage	0,4V on 20mA
Sensor Size	32x16,5 mm

Mechanical scheme



Electrical scheme



Fotodocumentation

