



# Sensor H02

### Short characteristics of Sensor

Rotating sensor H02 is designed for automotive shaft position monitoring. For working with two inductors enable separation sparks at base state signal of sensor (Fall/Rise edge).

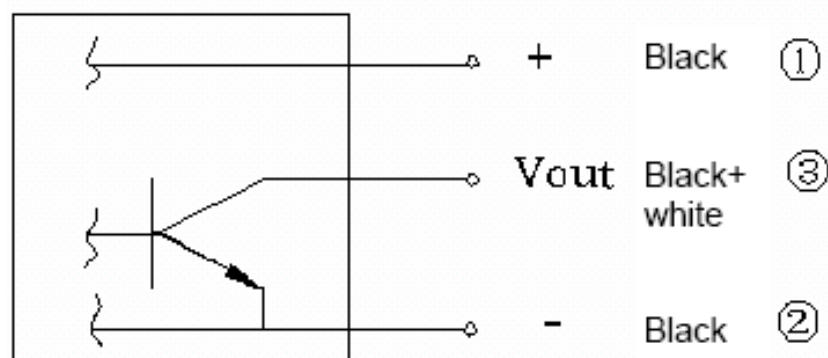
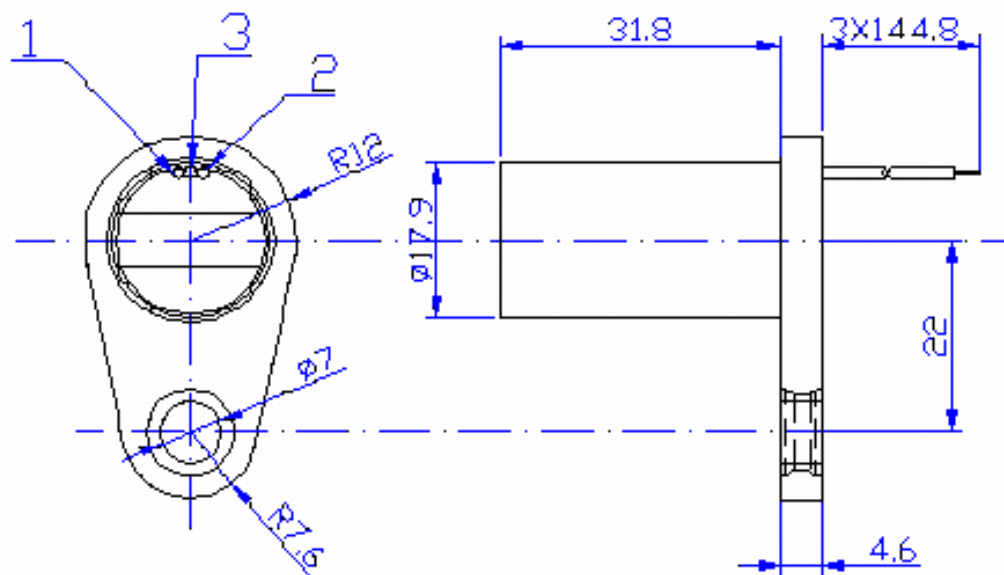
Physical principle is intelligent Hall sensor and Magnet. Magnetic field is breaking by ferro-magnetic (iron) rotating disc.

Sensor is determinate for ignition of type *Universal Ignition* and *Direct Ignition*.

### Main Features

Parametes	Range
Supply voltage	4,5 – 30V
Current consumption	9mA
Engine working speed	0 to 25.000 rpm
Operating Temperature Range	-40 to 150°C
Output type	Open colector (NPN)
Output current	40mA
Output voltage	40V
Output Saturation Voltage	0,4V on 20mA
Sensor Size	Ø17,9mm x 31,8mm

### Mechanical and electrical scheme



Fotodocumentation

